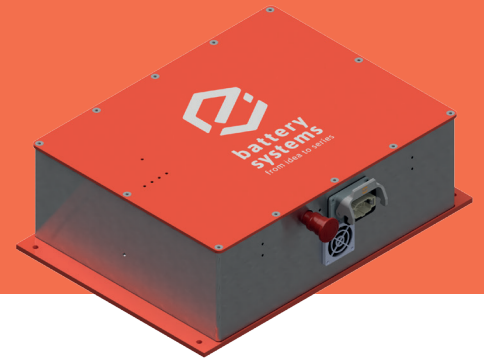


Battery Pack AM DBM



Technical Details

| | |
|----------------------|------------------------------|
| Input Voltage Range | 3 x 110 – 230 VAC +/- 10% |
| Capacity | 1336kWh, 2900mAh |
| Output Current | 5A for 1800s |
| Protection Class | IP20 |
| Operating Temperatur | 0 - 45°C |
| Dimensions | 550 x 380 x 160 mm |

Energy Buffer System for DBL Chargers

As the technology and market leader for automotive battery charging systems and process power supplies, these are used by leading automobile manufacturers in production, workshops and showrooms around the world.

The power requirement of a vehicle during the manufacturing process has increased steadily in recent years, as ever larger consumers are built into the vehicle. These must be put into operation, tested and thus supplied by a charger / process power supply during the production process. Since the supply of the charger/process power supply with the mains cannot be guaranteed everywhere on the production line, this must be buffered from a battery during this time.

As a new solution, we offer the AM DBM battery buffer system for supplying the charger / process power supply.

Key Features

Supply of the charger during a no-current zone with up to 2500 W

Compensating for voltage fluctuations on the belt for the attached charger

The supply time is at least 1800 seconds

Fast connection technology via industrial connector

Quick change of the battery modules for maintenance purposes

Safe handling of accumulators through internal BMS and emergency button

Customer Benefit

Vehicle diagnosis during the transfer from one conveyor belt to another
Smooth supply transition from conveyor belt power supply to the AM DBM energy storage supply